

Definition/Description:

Exposure to the natural environment is essential to a population's quality of life. Areas of green space or free space, as typical with parks, contribute to a population's health, economic, social and spiritual needs as well as its well-being. This is important not only to the present generation, but also to our future generations.

Parks are widely recognized areas of open outdoor space designated for year-round enjoyment of nature appreciation, quiet relaxation and outdoor recreation. The landscape ranges from gardens of floral displays to grassed areas to forests and marshland that wildlife call home. There is ample space for playgrounds for children, picnic and barbecue areas, paths for cycling, walking and cross-country skiing, athletic fields and even ponds providing refuge for many species of waterfowl.

Method

The information for this indicator was obtained by reviewing several documents and web sites including the City of Winnipeg, Rural Municipalities of East and West St. Paul, Province of Manitoba and Destination Winnipeg.

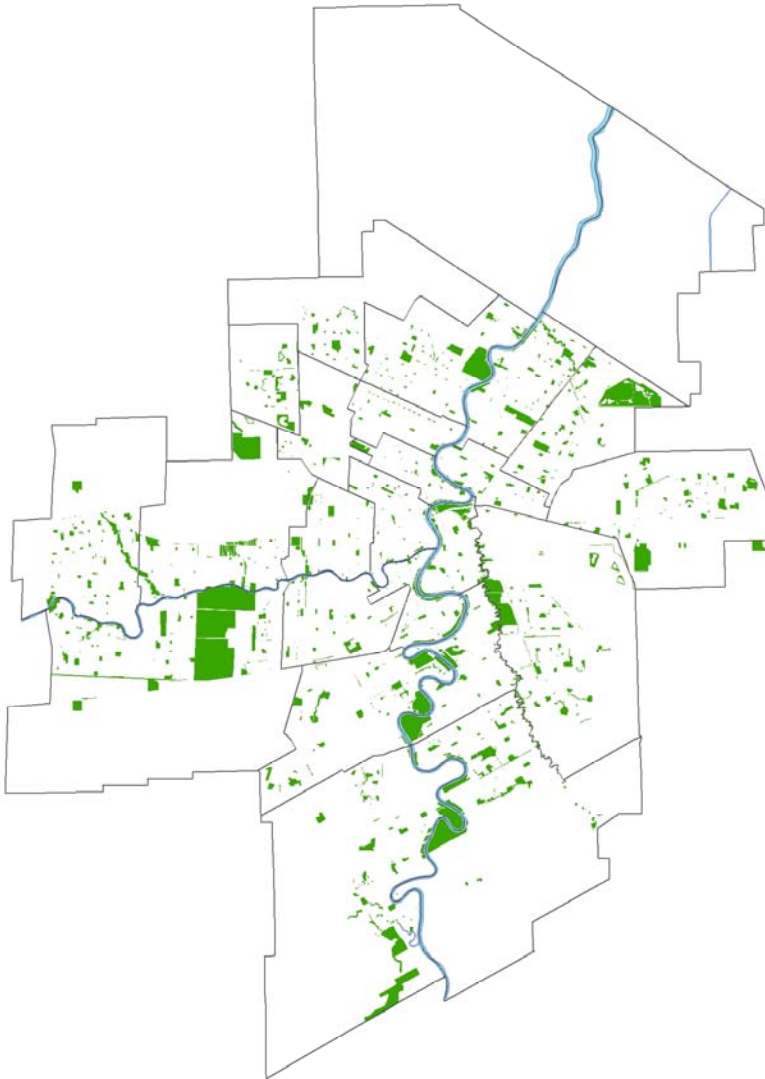
Source:

Information sources for this section were:

1. City of Winnipeg (web site). Community Services Department.
2. Destination Winnipeg (web site). Economic Development and Tourist Information.
3. Manitoba Intergovernmental Affairs (web site). Manitoba Community Profiles: Rural Municipality of East St. Paul and Rural Municipality of West St. Paul.
4. Rural Municipality of East St. Paul. Public Works/Planning Division.
5. Rural Municipality of West St. Paul. Public Works/Planning Division.

Findings:

Distribution of Public Parks in Winnipeg



Note: Winnipeg Parks data is based on 1997/98 data. Data for East and West St. Paul were unavailable, therefore park sites in these areas are not reflected on the map.

Highlights:

- Residents of the Winnipeg Health Region have access to more than 10500 acres or 43 sq. km of park area.
- In terms of physical sites, this represents some 955 parks, including 8 regional city parks. These include the Assiniboine, Kil-Cona, Kildonan, King's, La Barriere, Little Mountain, St. Vital and Whittier Parks.
- Park space accounts for approximately 7% of the total area of the WHR.