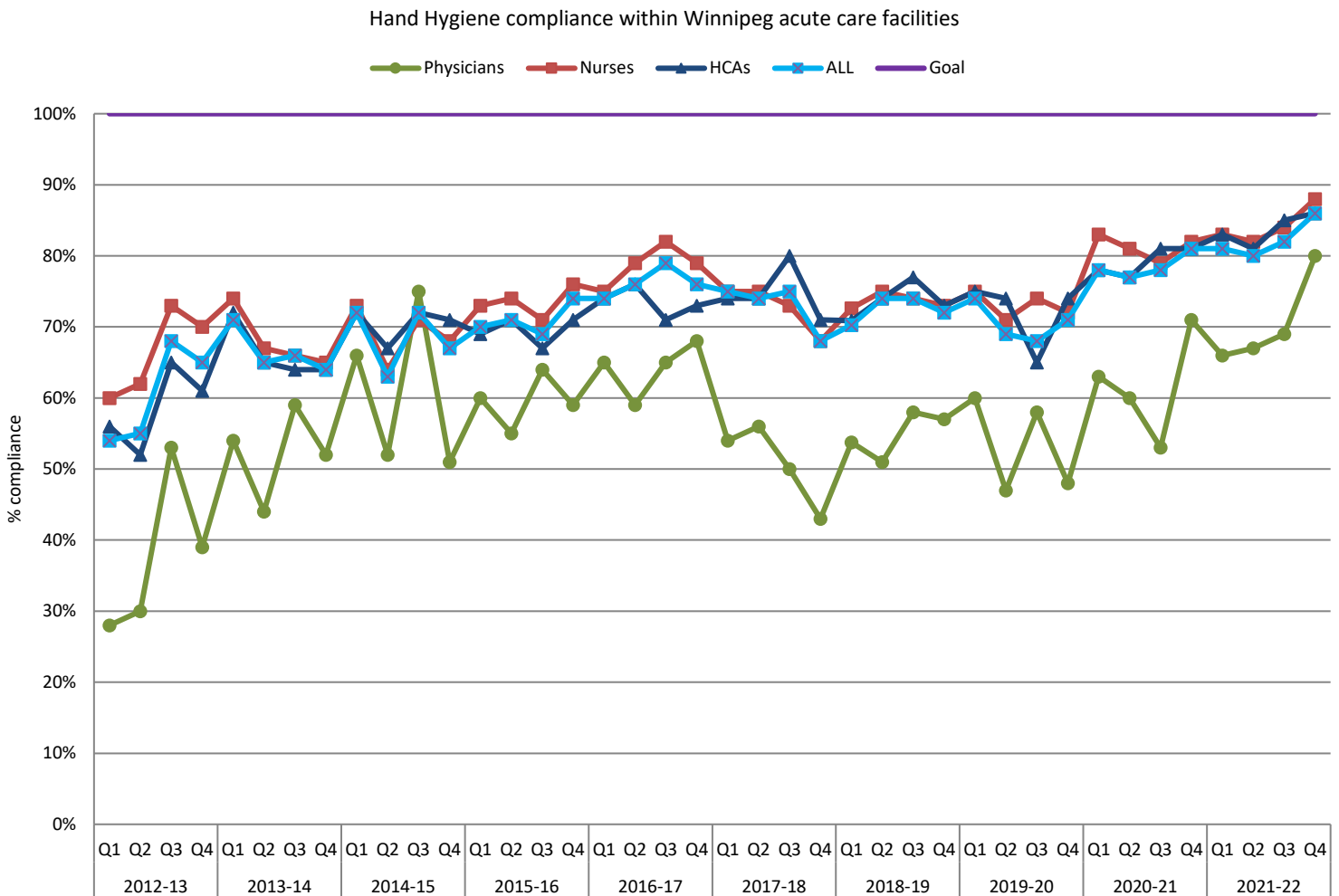




Hand Hygiene Auditing Results in the WRHA by Facility/Area



On a quarterly basis, specific units within each facility are audited for hand hygiene compliance. These units are alternated over the quarters. For example, Unit A at Hospital 1 is audited Q1 and Q3; while Unit B at Hospital 1 is audited Q2 and Q4. Generally the units audited each quarter remain consistent. Therefore, different staff are captured in alternating quarterly audit reports. This may contribute to the fluctuation in compliance apparent above.

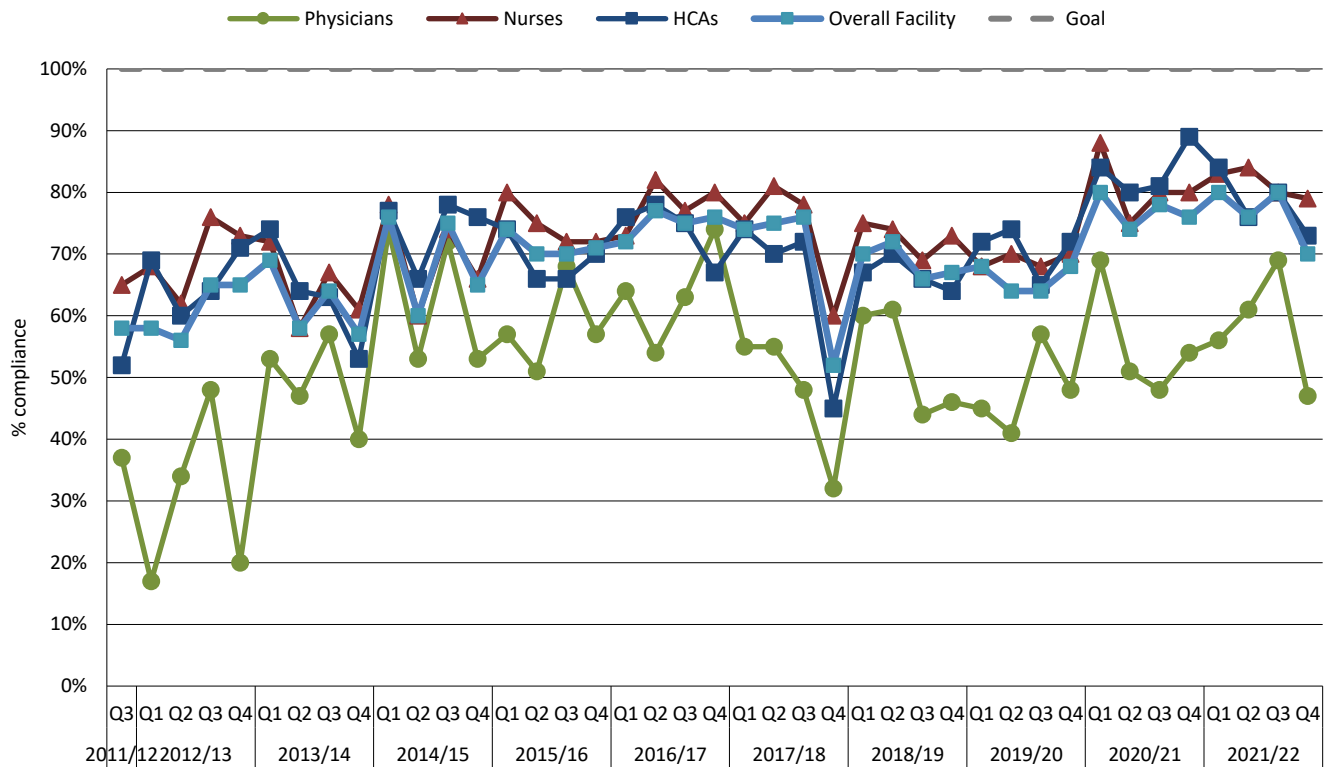
This chart shows a general improvement in hand hygiene compliance across all audited areas over time. This is more apparent since Q3-2019/20.

Overall facility: Hand hygiene compliance observed with ALL staff within the facility for that quarter. Different staff are captured in alternating quarterly audit reports. This may contribute to the fluctuation in compliance apparent above. A total of 20 observations per healthcare worker category must be made during audits in order for a relevant statistic for that individual healthcare worker category to be shown for that quarter.

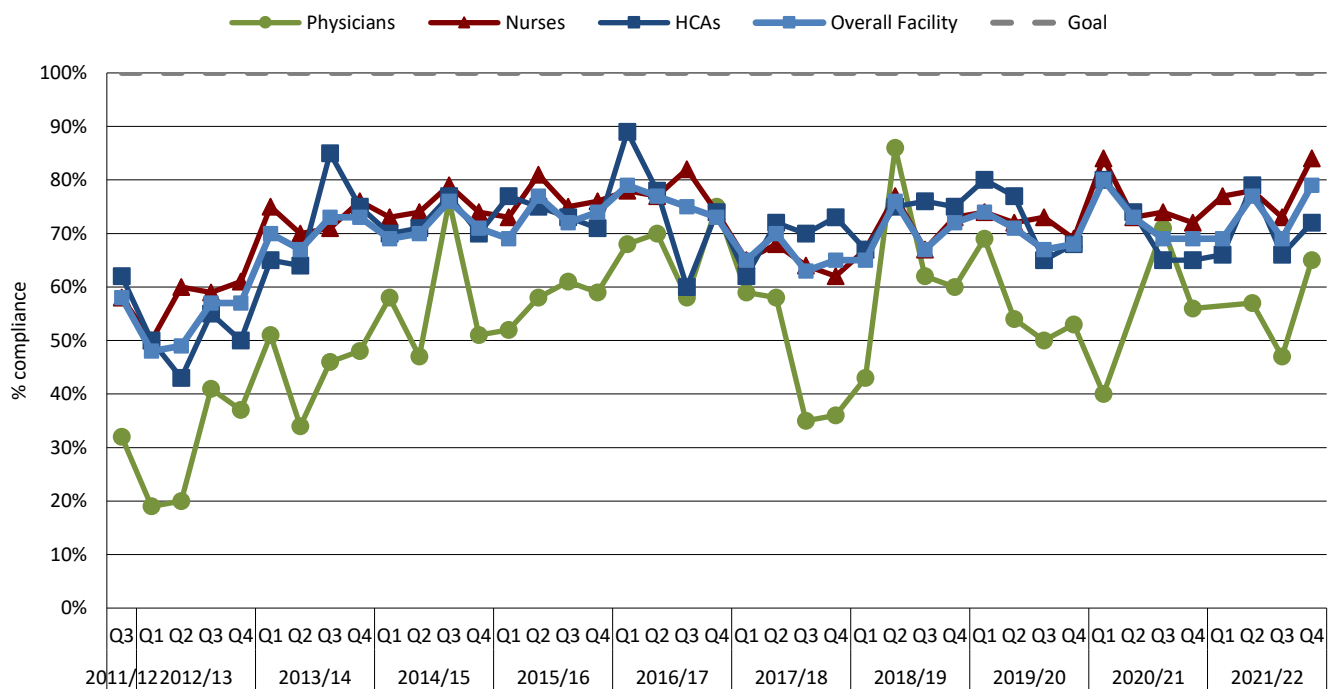


Hand Hygiene Auditing Results in the WRHA by Facility/Area

St. Boniface Hospital: Hand Hygiene Compliance



HSC (Adults): Hand Hygiene Compliance



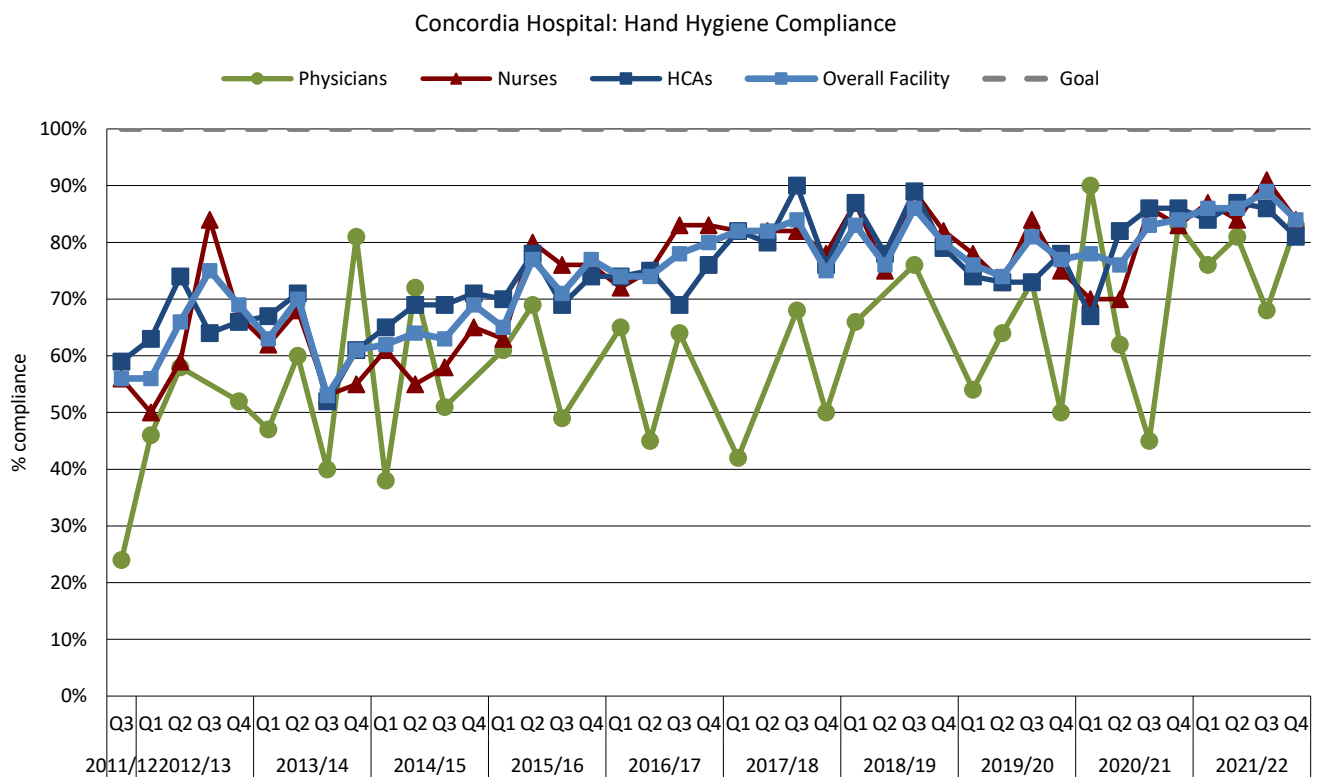
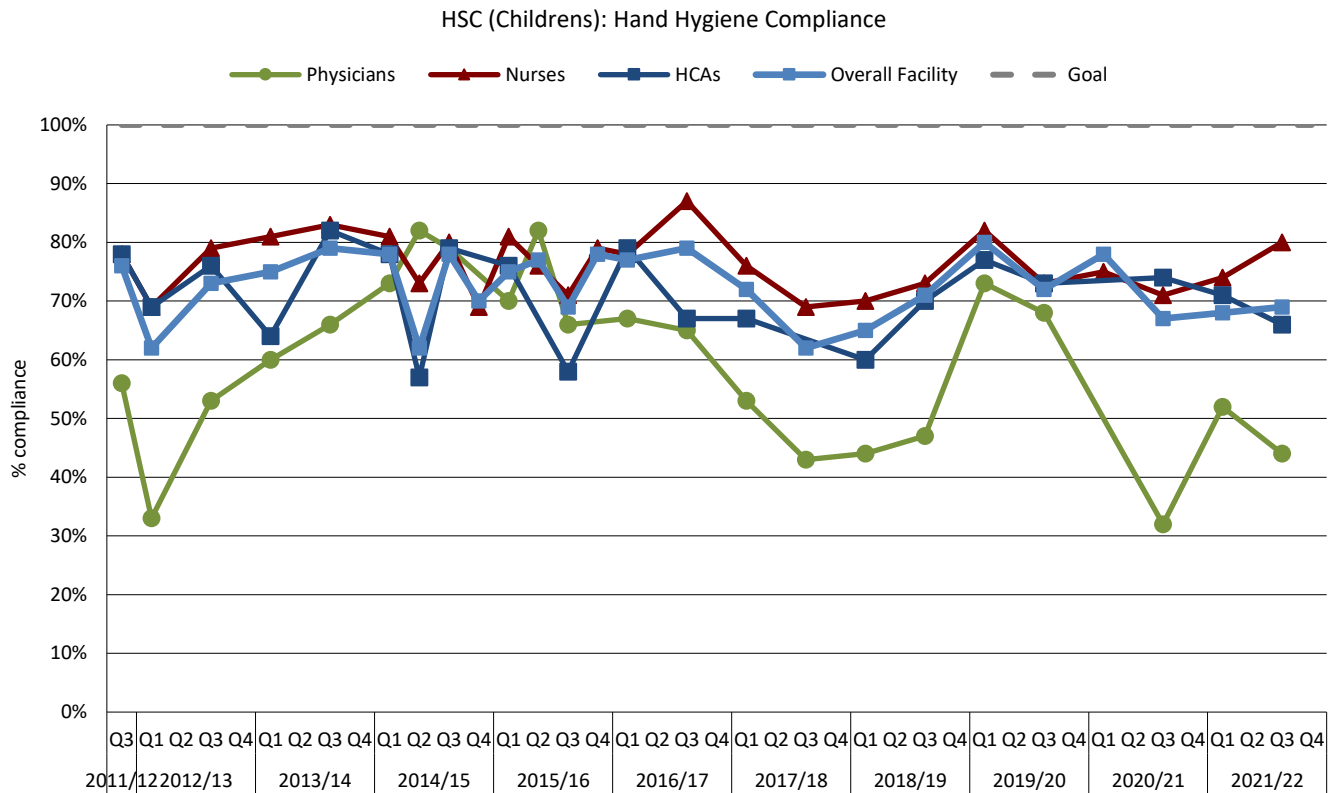
Overall facility: Hand hygiene compliance observed with ALL staff within the facility for that quarter.

Different staff are captured in alternating quarterly audit reports. This may contribute to the fluctuation in compliance apparent above.

A total of 20 observations per healthcare worker category must be made during audits in order for a relevant statistic for that individual healthcare worker category to be shown for that quarter.



Hand Hygiene Auditing Results in the WRHA by Facility/Area

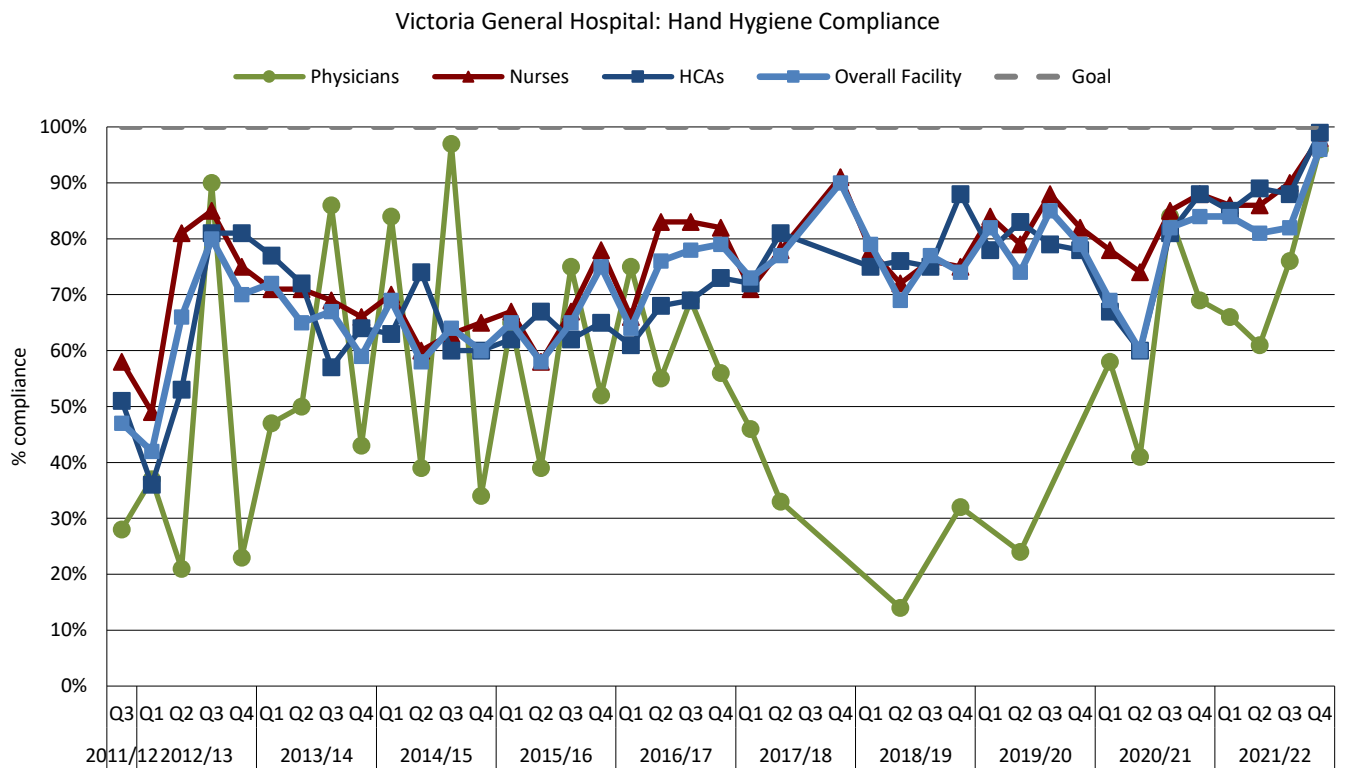
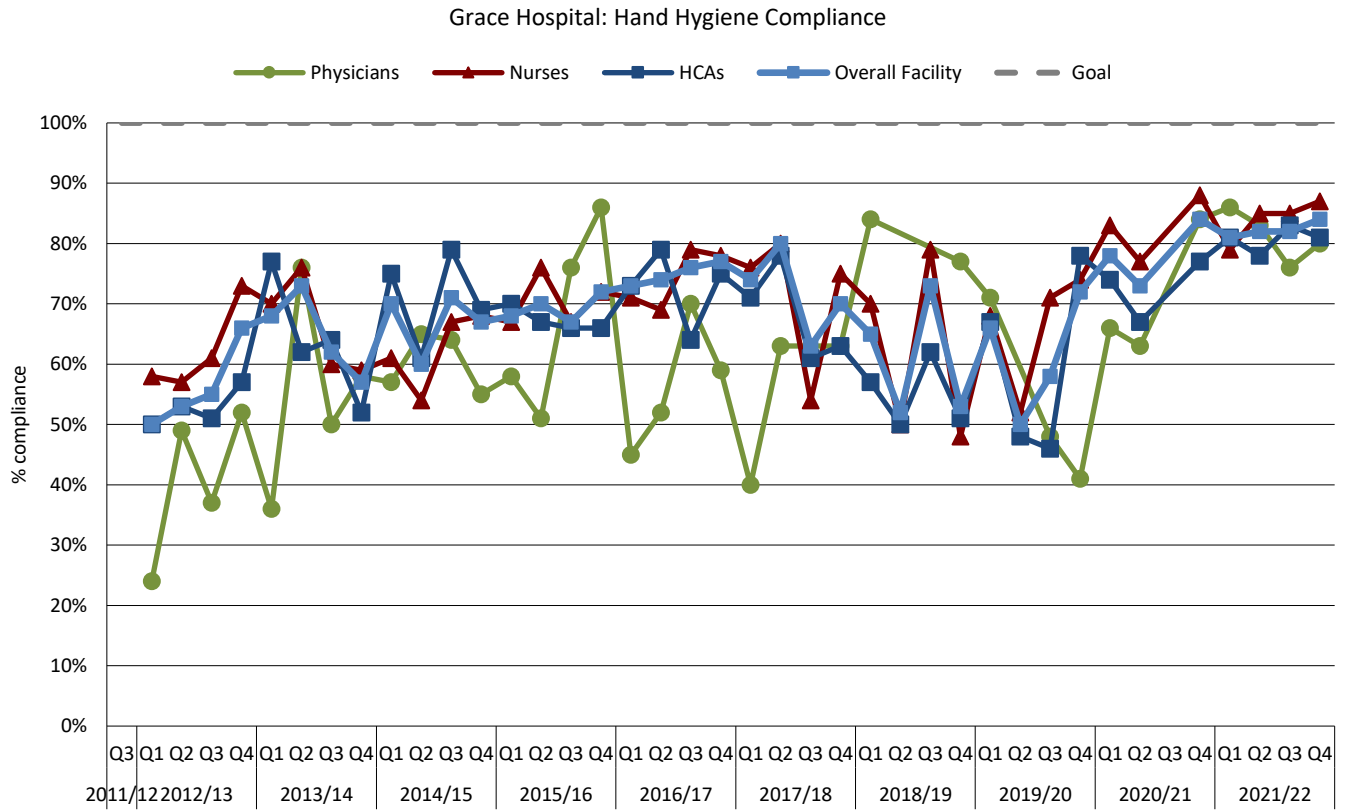


Overall facility: Hand hygiene compliance observed with ALL staff within the facility for that quarter.

Different staff are captured in alternating quarterly audit reports. This may contribute to the fluctuation in compliance apparent above. A total of 20 observations per healthcare worker category must be made during audits in order for a relevant statistic for that individual healthcare worker category to be shown for that quarter.



Hand Hygiene Auditing Results in the WRHA by Facility/Area



Overall facility: Hand hygiene compliance observed with ALL staff within the facility for that quarter.

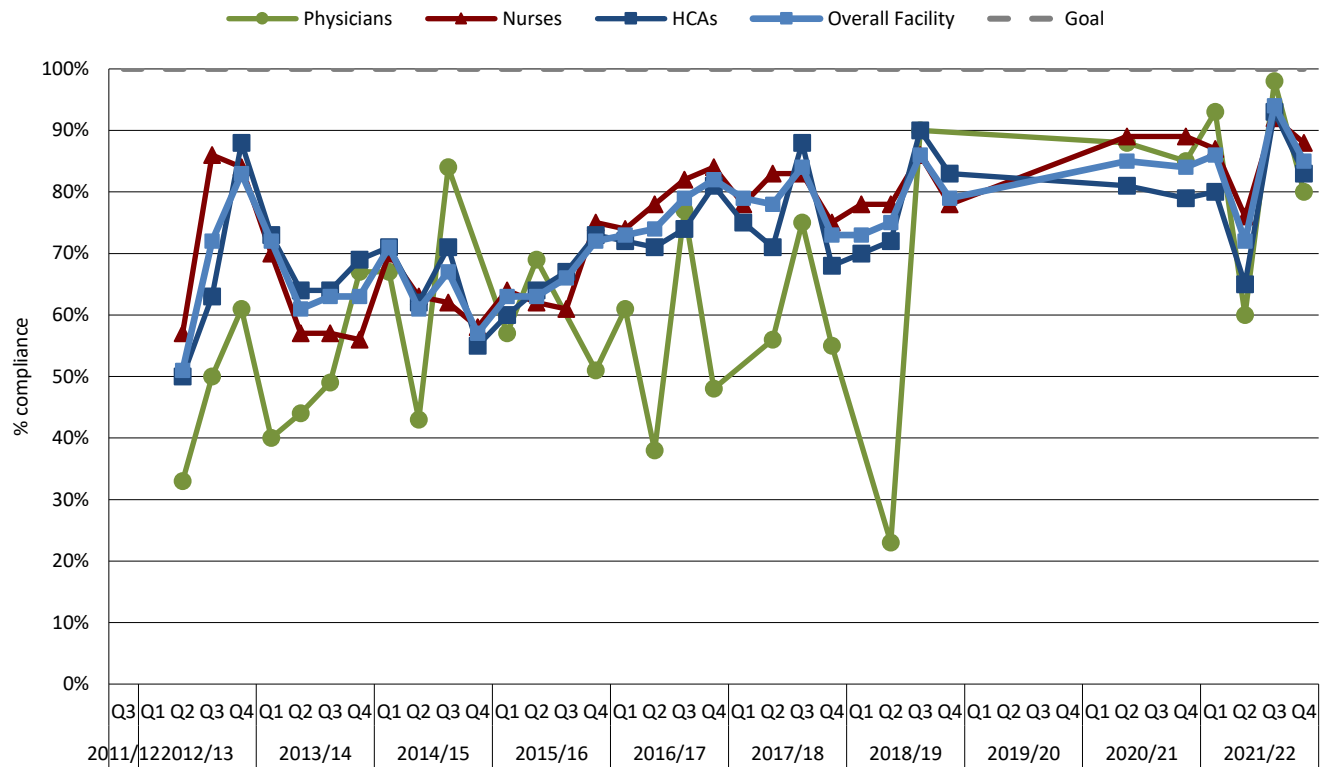
Different staff are captured in alternating quarterly audit reports. This may contribute to the fluctuation in compliance apparent above.

A total of 20 observations per healthcare worker category must be made during audits in order for a relevant statistic for that individual healthcare worker category to be shown for that quarter.

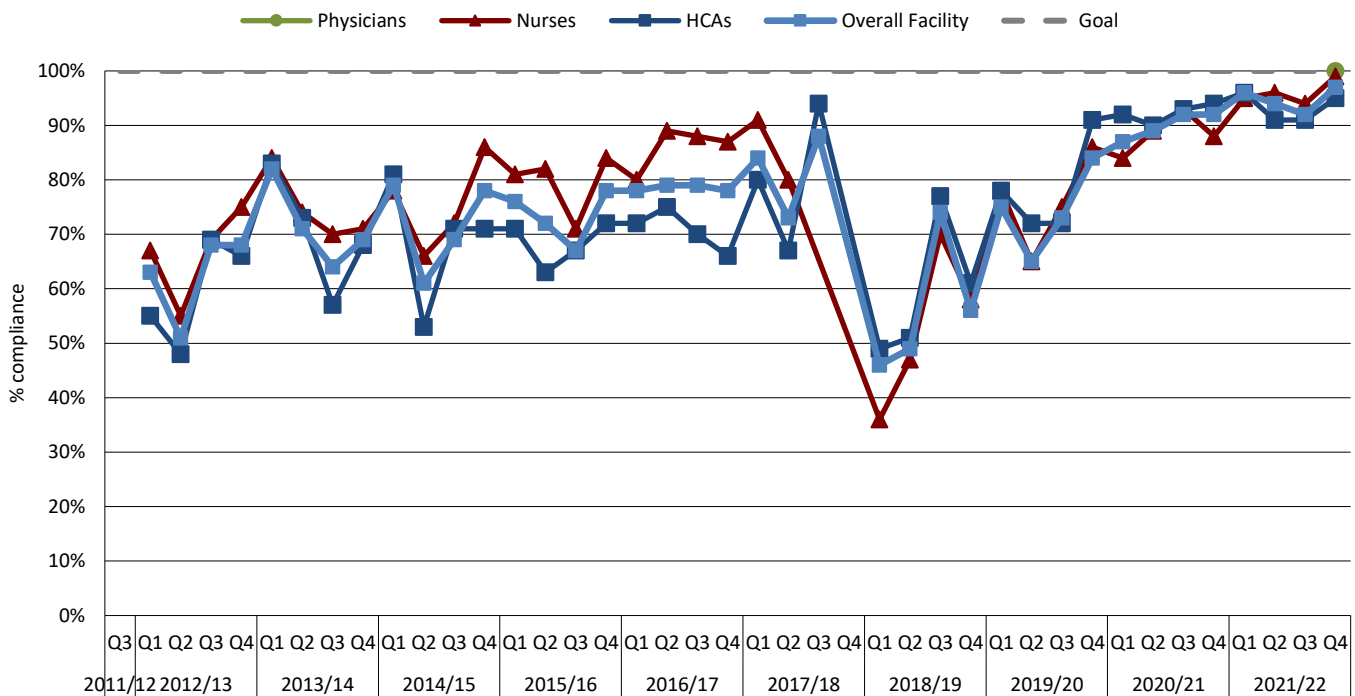


Hand Hygiene Auditing Results in the WRHA by Facility/Area

Seven Oaks General Hospital: Hand Hygiene Compliance



Deer Lodge Centre (acute care areas): Hand Hygiene Compliance



Overall facility: Hand hygiene compliance observed with ALL staff within the facility for that quarter.

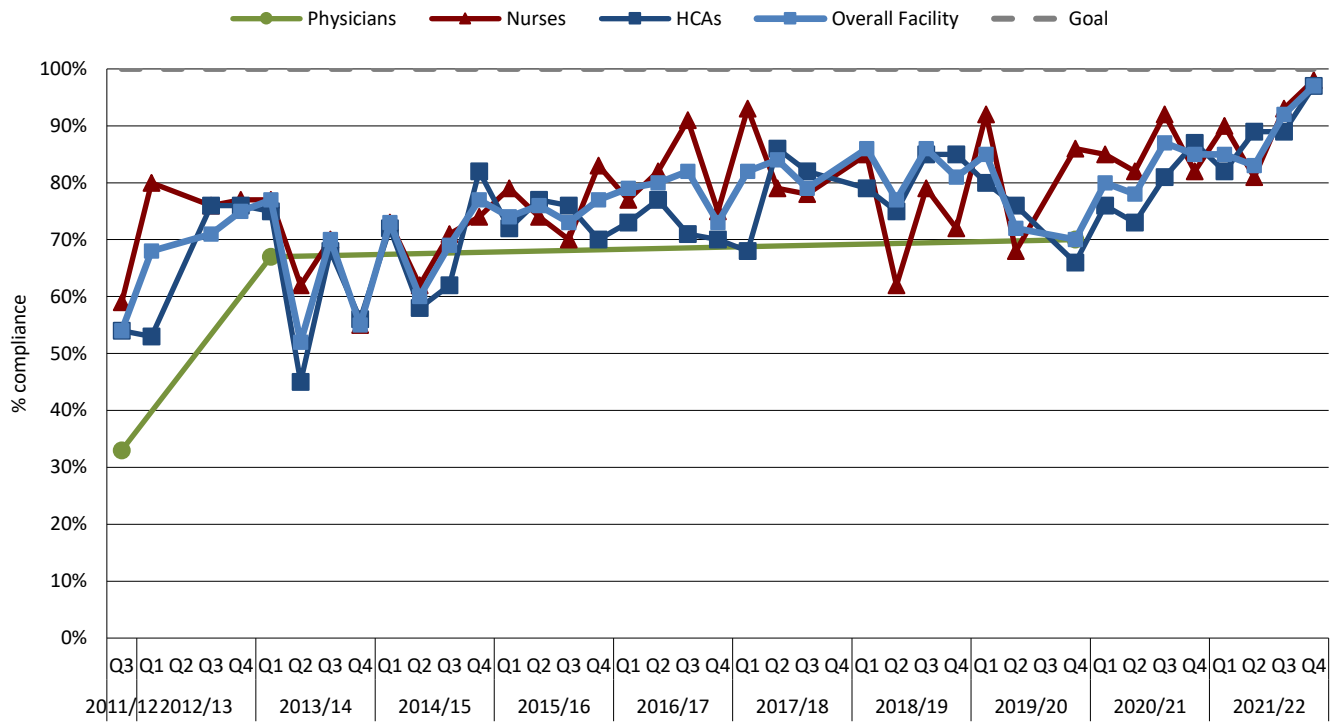
Different staff are captured in alternating quarterly audit reports. This may contribute to the fluctuation in compliance apparent above.

A total of 20 observations per healthcare worker category must be made during audits in order for a relevant statistic for that individual healthcare worker category to be shown for that quarter.

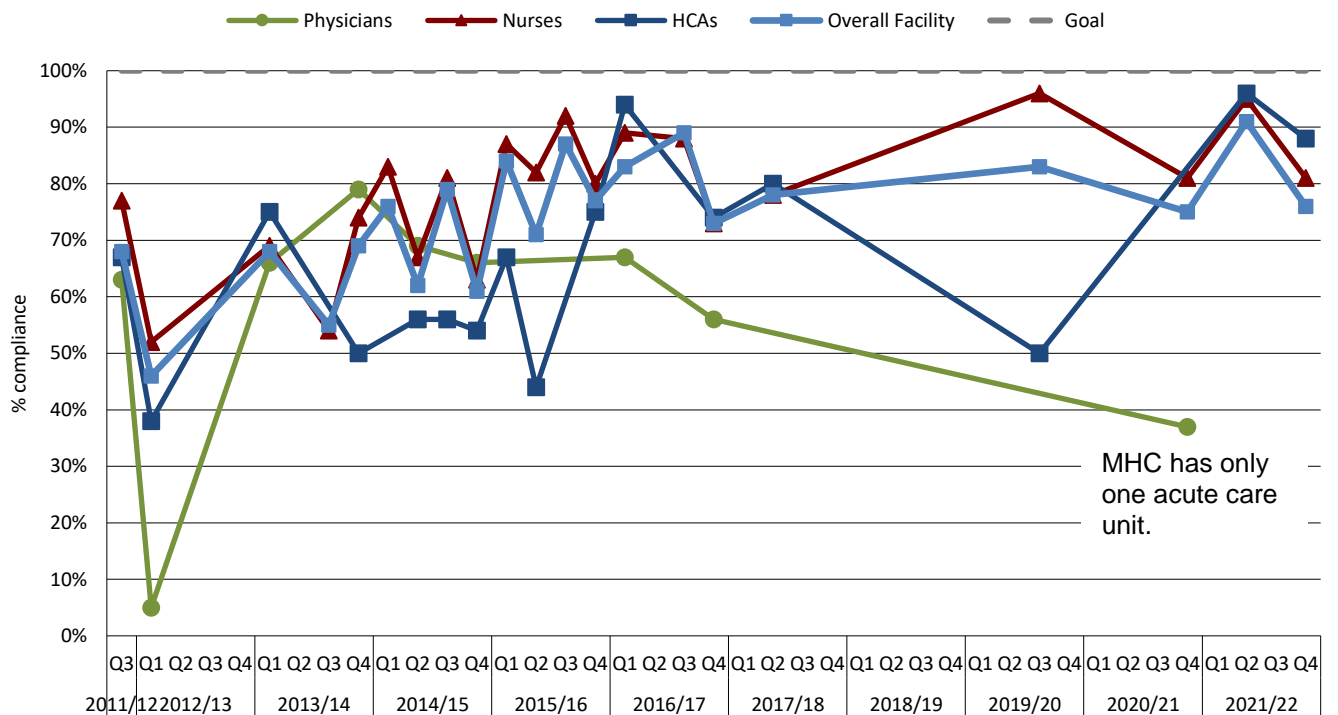


Hand Hygiene Auditing Results in the WRHA by Facility/Area

Riverview Health Centre (acute care areas): Hand Hygiene Compliance



Misericordia Health Centre (acute care areas): Hand Hygiene Compliance



Overall facility: Hand hygiene compliance observed with ALL staff within the facility for that quarter.

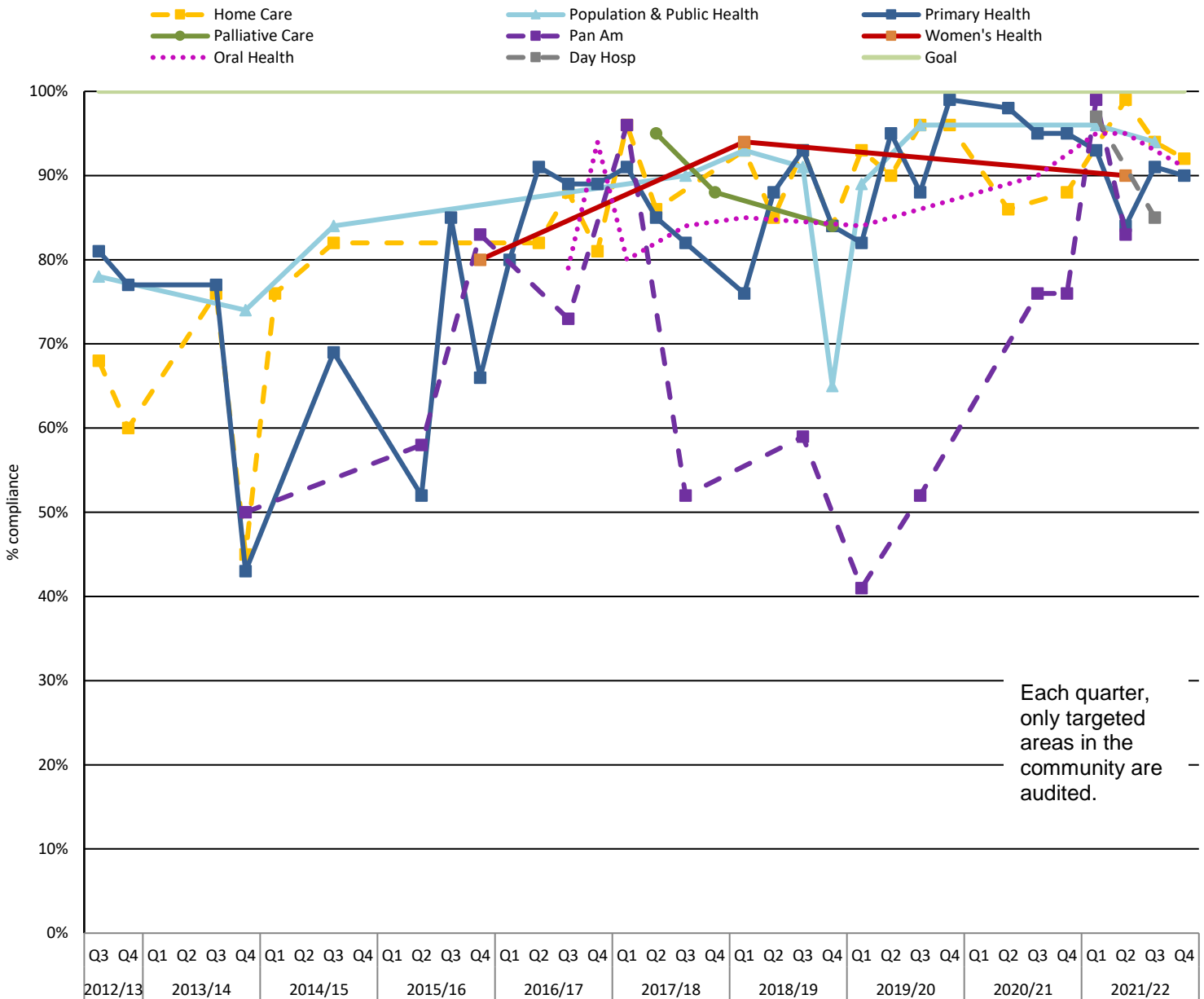
Different staff are captured in alternating quarterly audit reports. This may contribute to the fluctuation in compliance apparent above.

A total of 20 observations per healthcare worker category must be made during audits in order for a relevant statistic for that individual healthcare worker category to be shown for that quarter.



Hand Hygiene Auditing Results in the WRHA by Facility/Area

Community Programs: Hand Hygiene Compliance



Each quarter, only targeted areas in the community are audited.

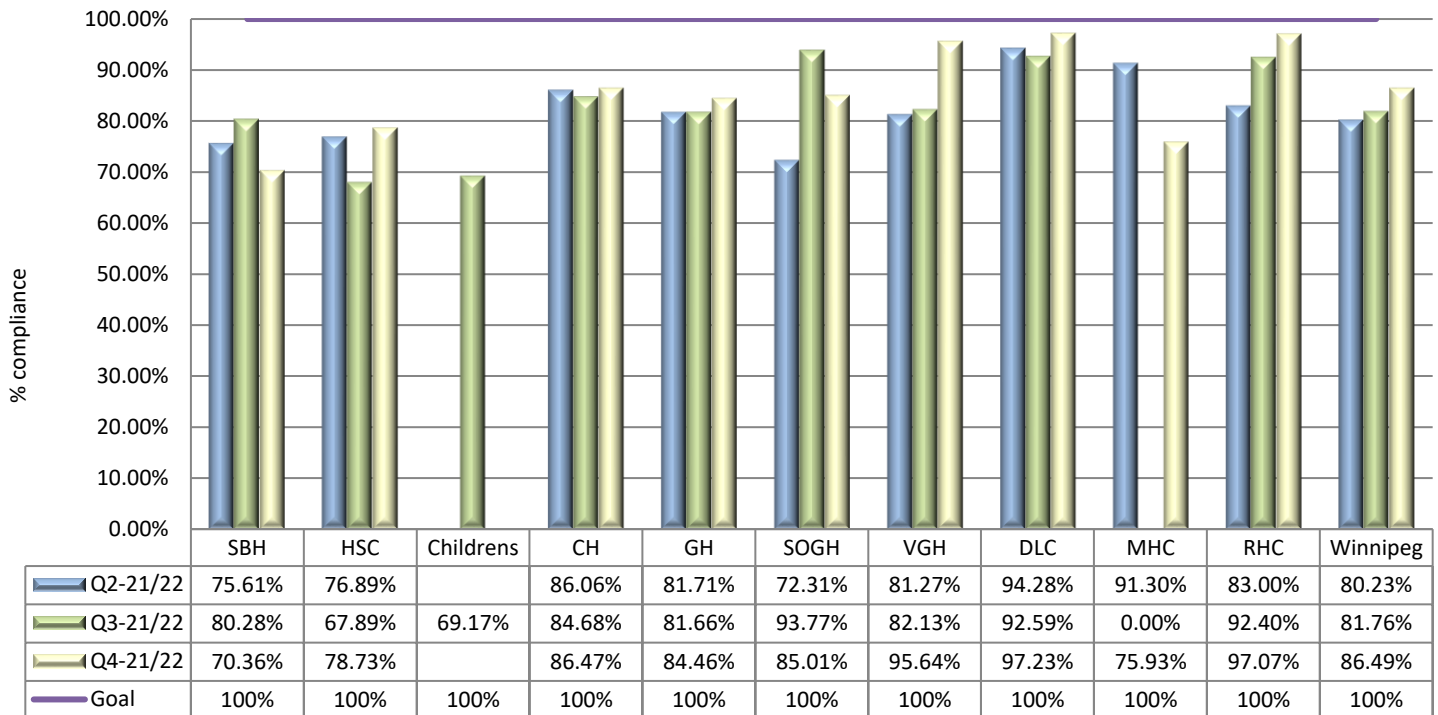
Overall facility: Hand hygiene compliance observed with ALL staff within the facility for that quarter.

Different staff are captured in alternating quarterly audit reports. This may contribute to the fluctuation in compliance apparent above. A total of 20 observations per healthcare worker category must be made during audits in order for a relevant statistic for that individual healthcare worker category to be shown for that quarter.

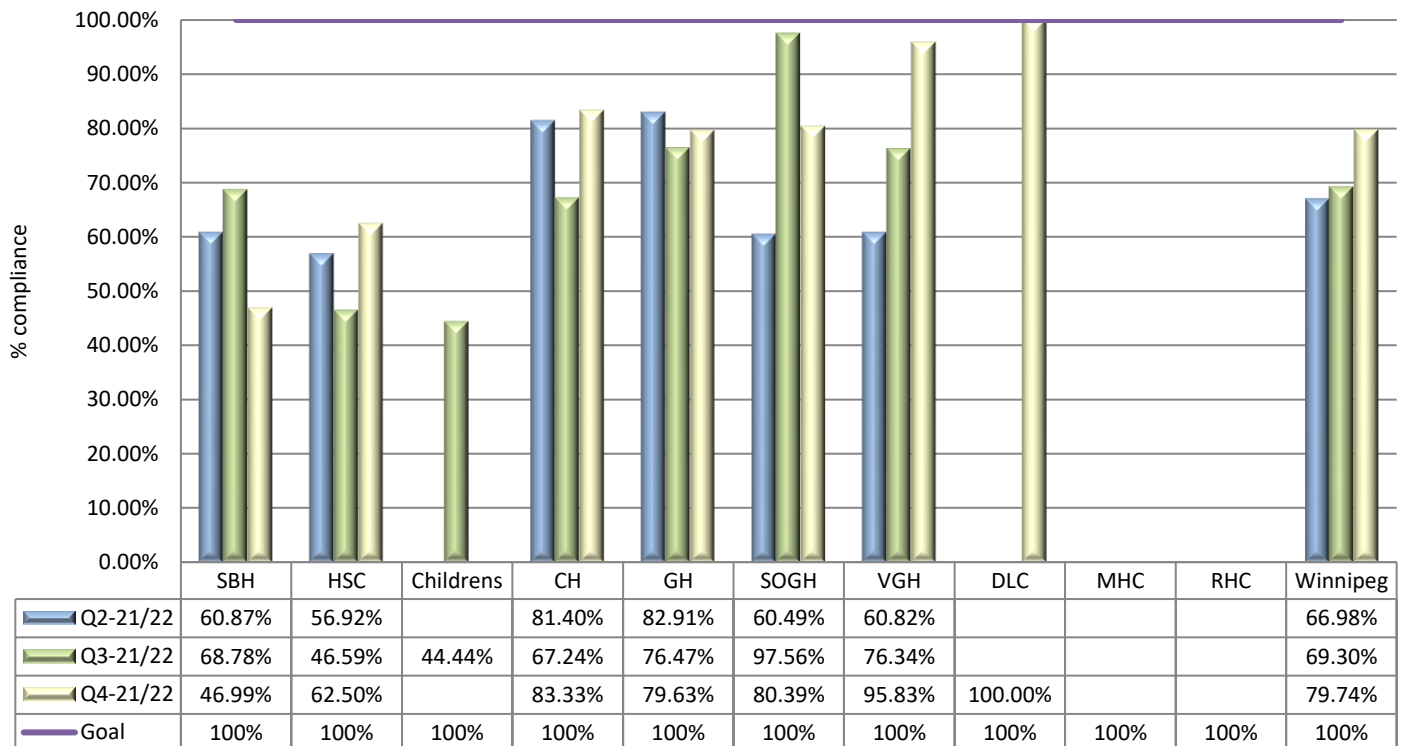


Hand Hygiene Auditing Results in the WRHA by Facility/Area

Overall Hand Hygiene Compliance by Facility for Q2-2021/22 - Q4-2021/22



Physician Hand Hygiene Compliance by Facility for Q2-2021/22 - Q4-2021/22



Overall facility: Hand hygiene compliance observed with ALL staff within the facility for that quarter.

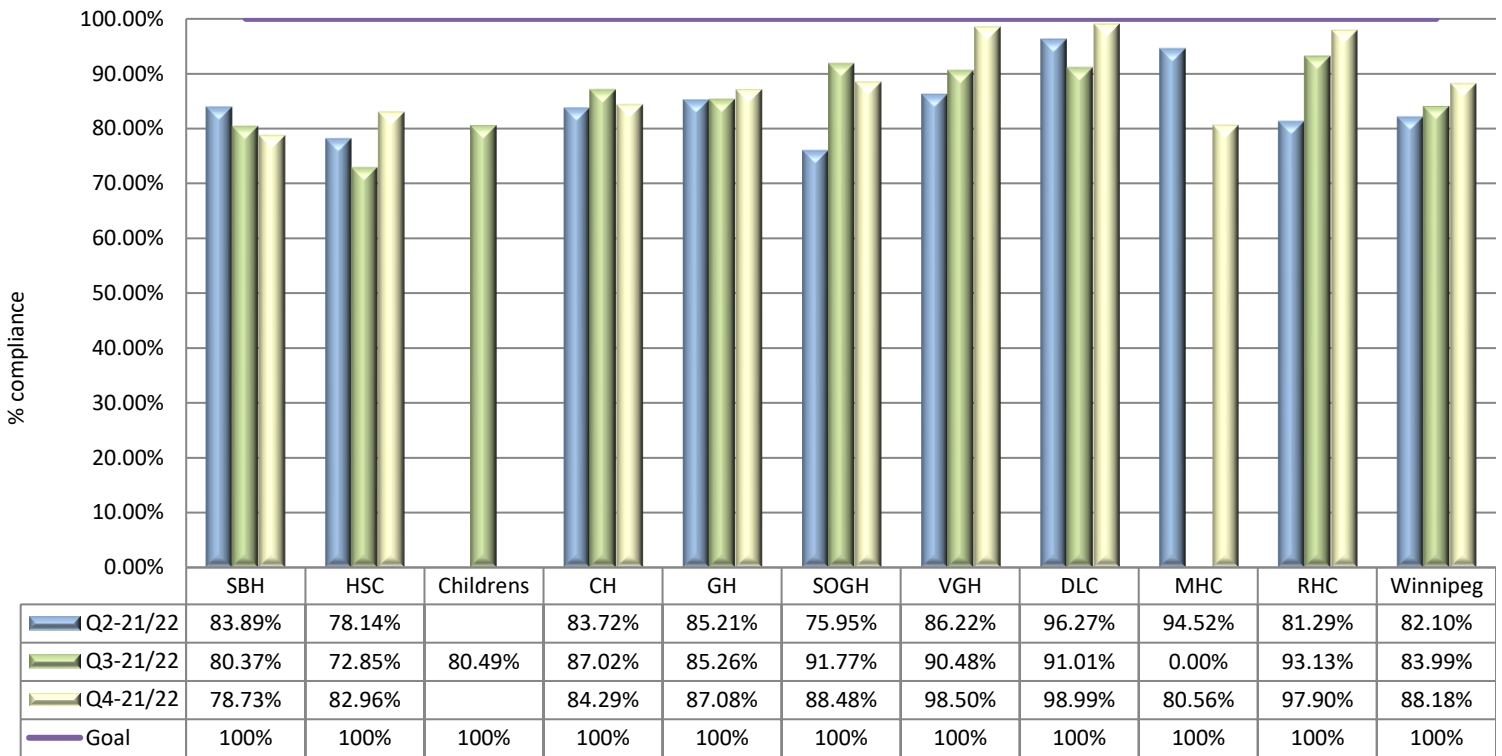
Different staff are captured in alternating quarterly audit reports. This may contribute to the fluctuation in compliance apparent above.

A total of 20 observations per healthcare worker category must be made during audits in order for a relevant statistic for that individual healthcare worker category to be shown for that quarter.

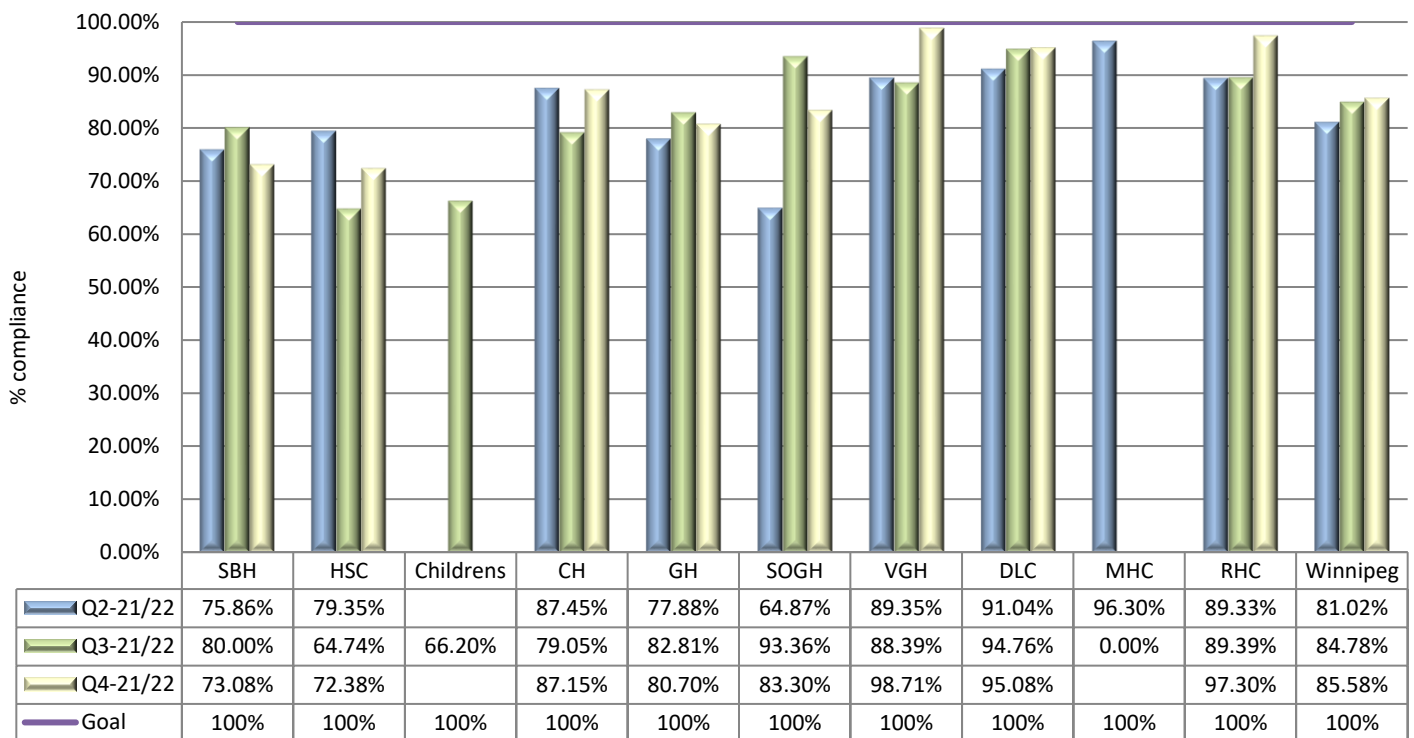


Hand Hygiene Auditing Results in the WRHA by Facility/Area

Nursing Hand Hygiene Compliance by Facility for Q2-2021/22 - Q4-2021/22



Healthcare Aide Hand Hygiene Compliance by Facility for Q2-2021/22 - Q4-2021/22



Overall facility: Hand hygiene compliance observed with ALL staff within the facility for that quarter.

Different staff are captured in alternating quarterly audit reports. This may contribute to the fluctuation in compliance apparent above.

A total of 20 observations per healthcare worker category must be made during audits in order for a relevant statistic for that individual healthcare worker category to be shown for that quarter.